

BS-1201-9FT7-POLLINATOR-B · SHELTERS & STRUCTURES

Bus Shelter



BUILT TO ORDER
 Every model is a starting point. Modify size, finish, mounting, and branding to suit the site.

STANDARD CONFIGURATION

Dimensions Dimensions: 115" L x 111.5" H x 48" D | Golden Treasure Shelter Frame, Bench, Ash Tray, & Pollinator **BS-1201-9ft7-Pollinator-B-SM** **BS-1201-9ft7-Pollinator-B-IG**

MATERIALS & CONSTRUCTION

- Laser-cut and formed steel, fully welded.
- Fabricated under one roof in Roanoke, Virginia.
- Multi-stage marine-grade powder-coat finish.
- Buy America (BABA) self-certification available.

CUSTOMIZE

- Size** Lengths, depths, and back height built to the dimension you specify.
- Finish** Any powder-coat color - 34 standard options, plus custom match.
- Mounting** Surface mount, In-ground (direct embed).
- Branding** Laser-cut logos, plaques, and donor recognition integrated into the piece.

ANCHORING & ORDER CODES

Surface mount **BS-1201-9ft7-Pollinator-B-SM**
 In-ground (direct embed) **BS-1201-9ft7-Pollinator-B-IG**

WARRANTY

Frame warranted against structural defect; powder-coat finish warranted against failure under normal public-realm use. Full terms on request.

POWDER-COAT FINISHES

34 standard colors · custom RAL match available

■ Black Peel	■ Black Texture	■ Cappuccino	■ Cargo Black	■ Chocolate Brown
■ Claret-Violet	■ Classic Grey	■ Cobalt Blue	■ Light Ivory	■ Fence Red
■ Fir Green	■ Green-Blue	■ Gun Metal	■ Glossy White	■ Java
■ Lemon Yellow	■ Light Blue	■ Luna	■ Mineral Bronze	■ Nut Brown
■ Olive Patina	■ Oxblood	■ Pastel Turquoise	■ Poly Silver Vein	■ Red Letter
■ Rust	■ Silver Hammerstone	■ Safety Yellow	■ Star Dust	■ Sulfur Yellow
■ Traffic Gray	■ Verdi	■ Water Blue	■ White Peel	

Sales Order: 12927-F

9'7" Bus Stop Shelter with Portrait Panels, - A

Date 3/22/23

Item: BS-1201-9ft7_Valley Metro, Portraits - A

Scale N.T.S

Finish: To be Approved

approved

By: MCO

PHONE 540.342.1548

approved as noted

FAX 540.342.1417

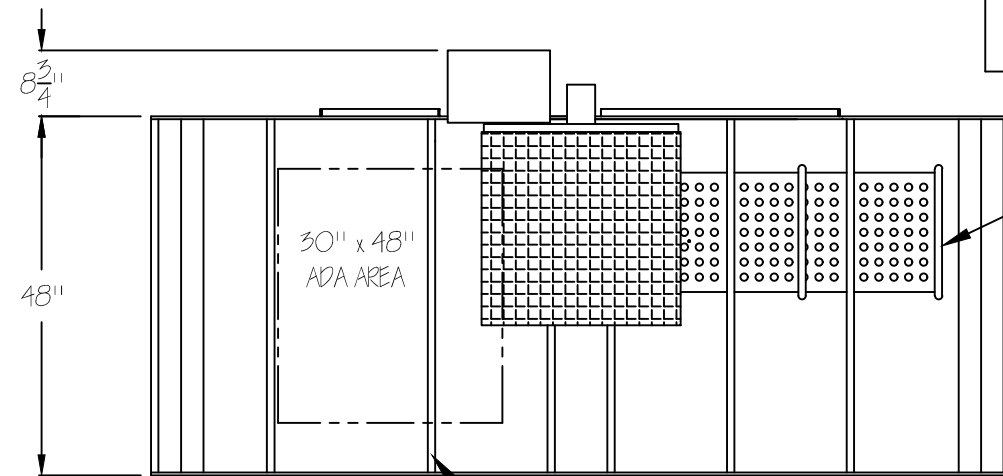
not approved revise as noted

WEB RCLFINC.COM



Renaissance reserves the right to make adjustments during fabrication to ensure product integrity, performance, and meet applicable UL standards.

Top View



- Bench
- B-1495-3-SM-1A
 - 17" Seat Height
 - 36"W x 18"D x 24"H
 - (1) intermediate arm rest.
 - Surface mounted.

(2) Linear LED Strip Lights integrated into fabricated roof frame for Dusk to Dawn Lighting

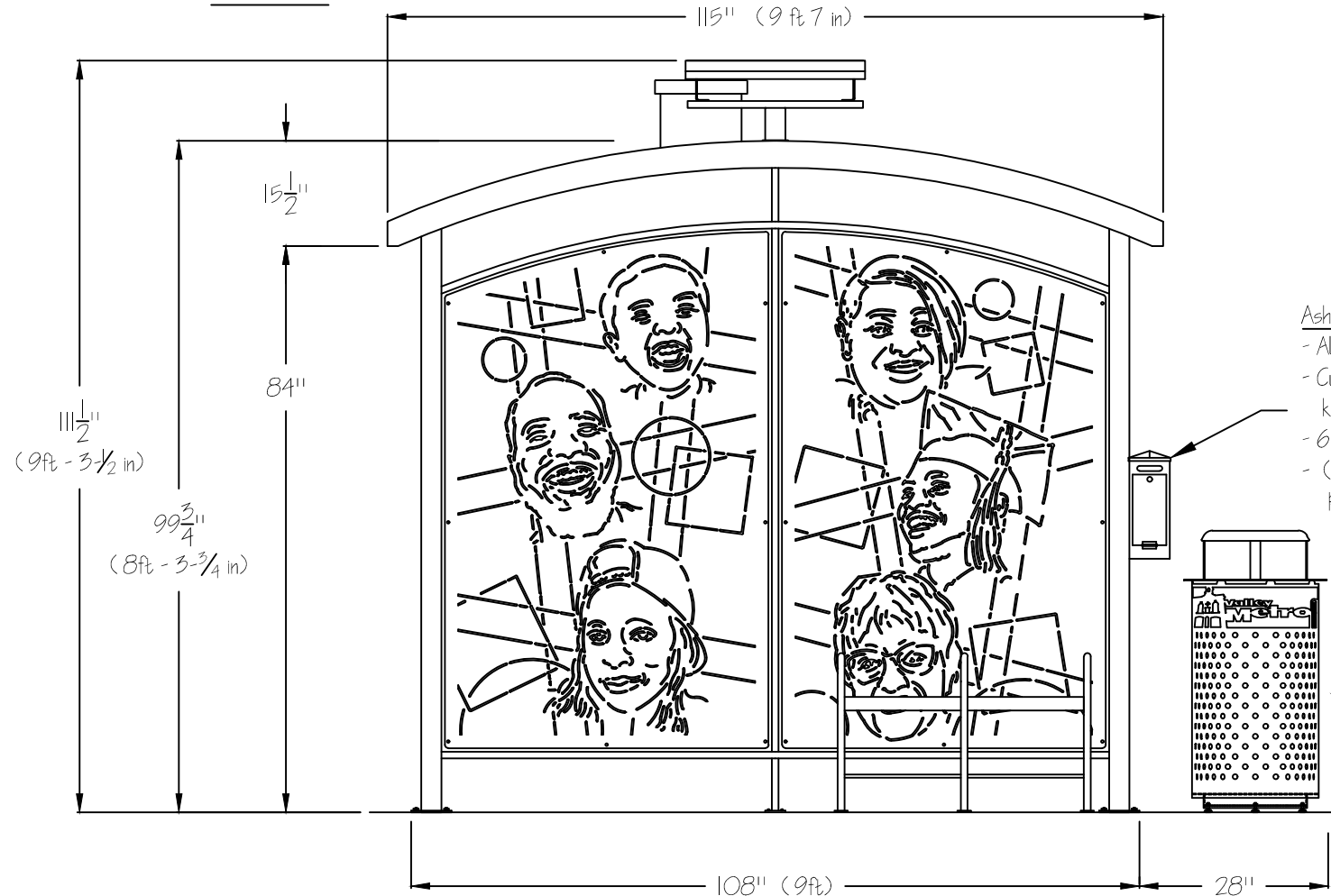
Important Information

- 9/16" dia holes provided in Mounting Plates
- Installation and Installation Hardware provided by others.
- All assembly hardware for Side, Back and Top Sections provided by RCLF

Solar Panel, Battery, Battery Box, Charging / Light Controller all provided to power and control LED lighting

If needed for transportation height clearances and / or installation constraints, Roof Section can be shipped separately and bolted / wired on site. (Unless otherwise noted when approved, Shelter will be assembled as shown)

Front View



- Ash Receptacle
- AU-2423
 - Custom pole mounted with keyed lock and liner.
 - 6"W x 6"D x 16" T
 - (Back View shown only to show door. Receptacle installed reversed from what is shown)

- Trash Receptacle
- TR-1934-20-SM-DL1
 - Includes custom Valley Metro, City of Roanoke artwork
 - 20 gallon Rubbermaid plastic liner
 - Surface Mounted.
 - Shown with RCLF Dome Lid I

Side View

Smoke tinted acrylic roof panels secure to fabricated metal roof frame

laser cut metal side panels with pattern bolt to frame

3" square tubing main frame

