

RF-R-0009-HFC · LITTER, RECYCLING & ASH

# RF-R-0009-HCC Towel Receptacle



**BUILT TO ORDER**  
 Every model is a starting point. Modify size, finish, mounting, and branding to suit the site.

**CUSTOMIZE**

- Size** Lengths, depths, and back height built to the dimension you specify.
- Finish** Any powder-coat color - 34 standard options, plus custom match.
- Mounting** Surface mount, Freestanding / portable.
- Branding** Laser-cut logos, plaques, and donor recognition integrated into the piece.

**STANDARD CONFIGURATION**

Dimensions Dimensions: 45.5" H x 30" Square | Gunmetal Powder Coat

**ANCHORING & ORDER CODES**

Surface mount **RF-R-0009-HFC-SM**  
 Freestanding / portable **RF-R-0009-HFC-FS**

**MATERIALS & CONSTRUCTION**

- Laser-cut and formed steel, fully welded.
- Fabricated under one roof in Roanoke, Virginia.
- Multi-stage marine-grade powder-coat finish.

**WARRANTY**

Frame warranted against structural defect; powder-coat finish warranted against failure under normal public-realm use. Full terms on request.

**POWDER-COAT FINISHES**

34 standard colors · custom RAL match available

- |                 |                      |                    |                    |                   |
|-----------------|----------------------|--------------------|--------------------|-------------------|
| ■ Black Peel    | ■ Black Texture      | ■ Cappuccino       | ■ Cargo Black      | ■ Chocolate Brown |
| ■ Claret-Violet | ■ Classic Grey       | ■ Cobalt Blue      | ■ Light Ivory      | ■ Fence Red       |
| ■ Fir Green     | ■ Green-Blue         | ■ Gun Metal        | ■ Glossy White     | ■ Java            |
| ■ Lemon Yellow  | ■ Light Blue         | ■ Luna             | ■ Mineral Bronze   | ■ Nut Brown       |
| ■ Olive Patina  | ■ Oxblood            | ■ Pastel Turquoise | ■ Poly Silver Vein | ■ Red Letter      |
| ■ Rust          | ■ Silver Hammerstone | ■ Safety Yellow    | ■ Star Dust        | ■ Sulfur Yellow   |
| ■ Traffic Gray  | ■ Verdi              | ■ Water Blue       | ■ White Peel       |                   |

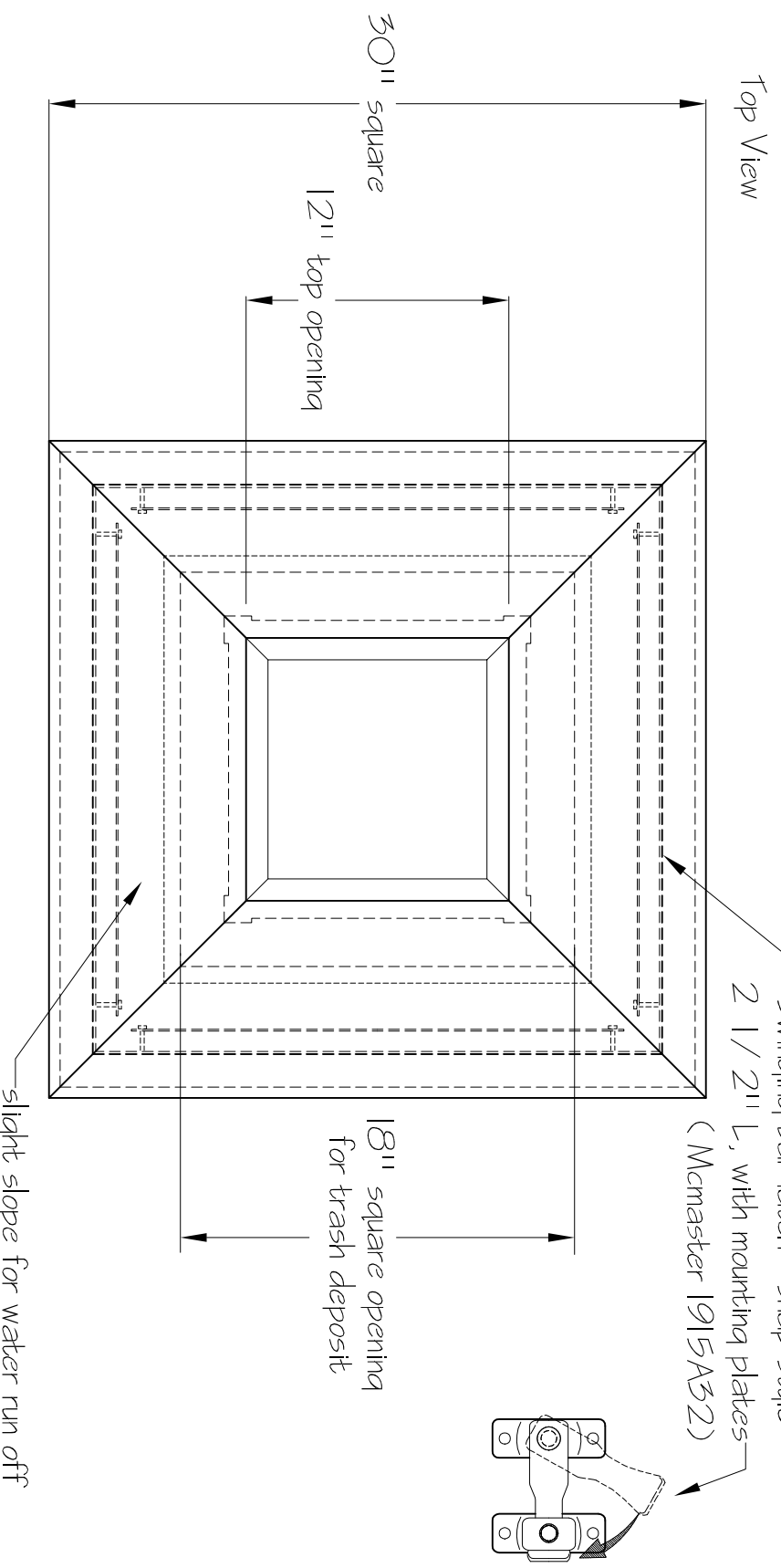
sales order 5743		Custom Trash Receptacle	Date 05-02-13
Item 0000		N2. R-R-0009	Scale 1/8"=1"
Finish TBP		<input type="checkbox"/> approved	
PHONE 540.342.1548 FAX 540.342.1417		<input type="checkbox"/> approved as noted	
WEB RCLFING.COM		<input type="checkbox"/> not approved revise as noted	



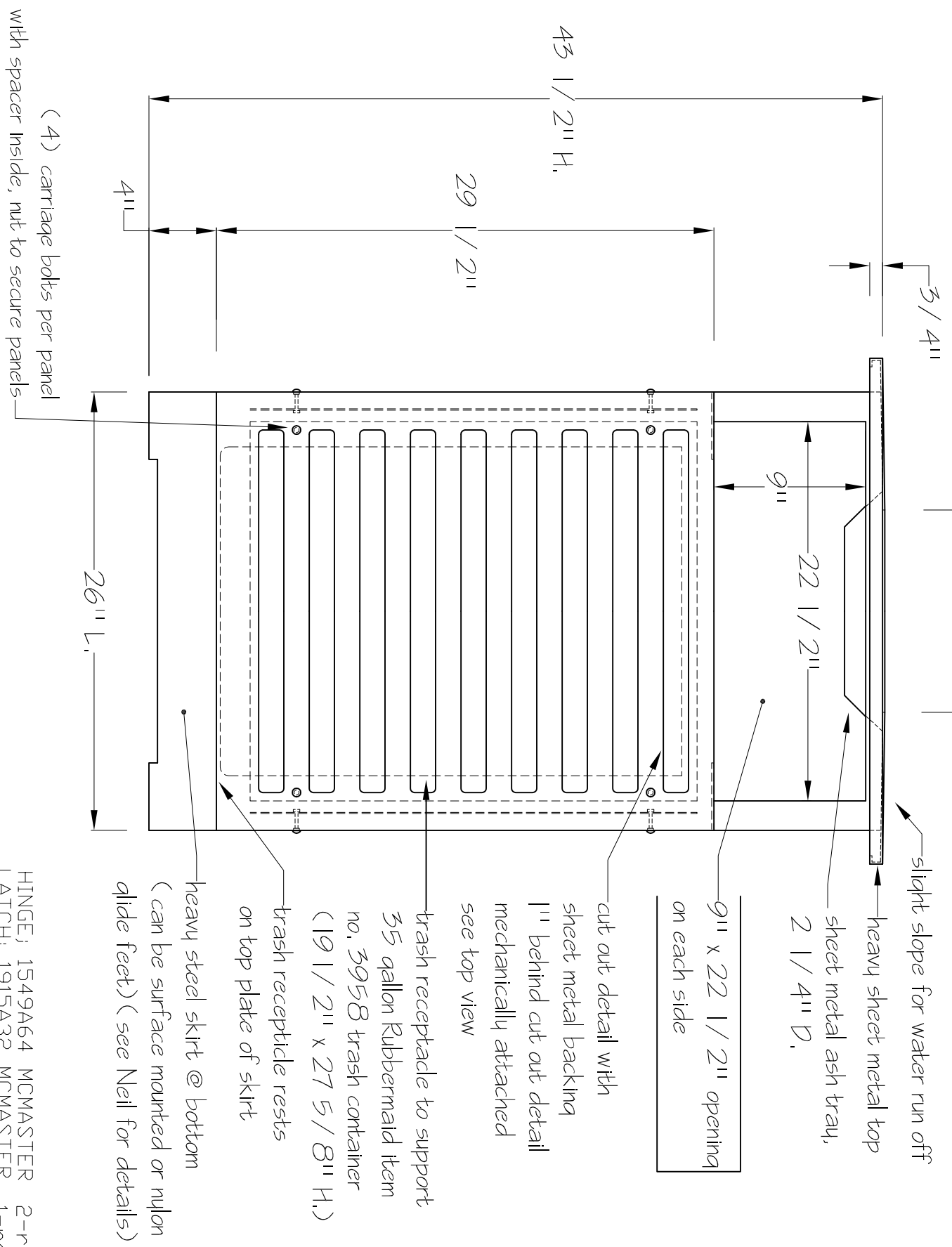
\* sketch only, drawing not for fabrication \* revised details 05-28-13  
 \* revised details 05-29-13 \* revised details 05-31-13  
 \* revised details 06-03-13

35 gallon Rubbermaid item no. 3958  
 trash container (19 1/2" x 27 5/8" H.)

back of receptacle hinged opening for access  
 to trash container (see sketch) with latch



Front View



(4) carriage bolts per panel  
 with spacer inside, nut to secure panels

HINGE, 1549A64 MCMMASTER 2-req.  
 LATCH, 1915A32 MCMMASTER 1-req.