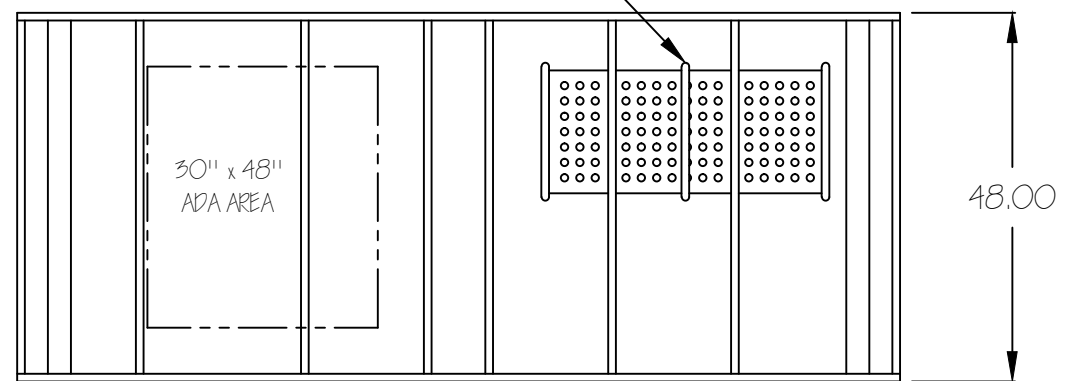


Sales Order: 7473-F	Custom 9'7" Bus Stop Shelter	Date 9/15/15
Item:	No. See below / spec sheet	Scale N.T.S
Finish: TBD	<input type="checkbox"/> approved	By: MBC
PHONE 540.342.1548 FAX 540.342.1417 WEB RCLF INC.COM	<input type="checkbox"/> approved as noted	
	<input type="checkbox"/> not approved revise as noted	

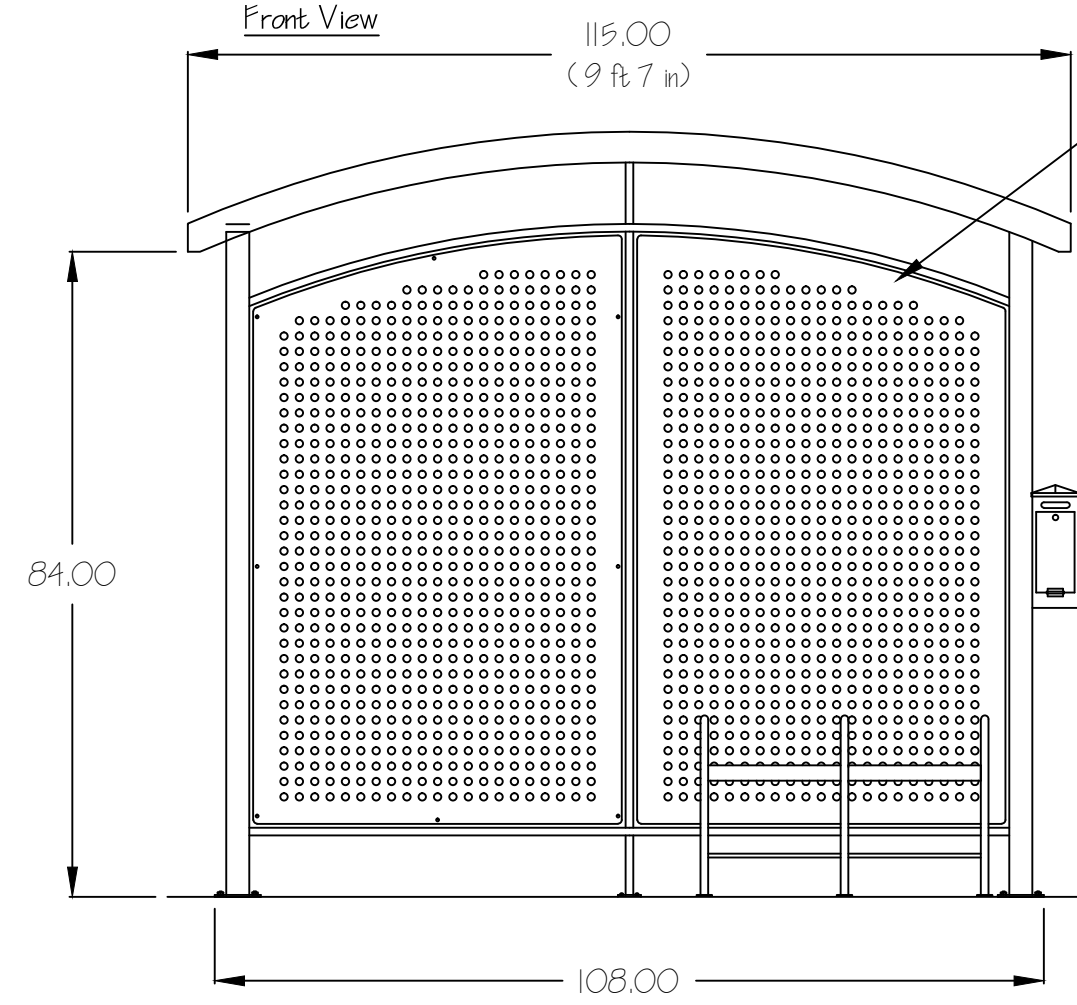


- Bench
- B-1495-3-SM-1A
  - 17" Seat Height
  - 36"W x 18"D x 24"H
  - (1) intermediate arm rest.
  - Surface mounted.

Top View



Front View



9'7" Bus Shelter

- BS-1201
- 9'W x 4'D x 8'H
- Surface mounted.
- Optional City of Roanoke Plaque  
(if plaque is wanted, please circle the above to indicate)

Ash Receptacle

- AU-2423
- Custom pole mounted with keyed lock and liner.
- 6"W x 6"D x 16" H
- Optional "Smoking" symbol on side.  
(if symbol is wanted, please circle the above to indicate)

Trash Receptacle

- TR-1934-20-SM-DLI
- Includes custom Valley Metro, City of Roanoke artwork
- 20 gallon Rubbermaid plastic liner
- Surface Mounted.
- Shown with RCLF Dome Lid I

Side View

